

Key Economic and Financial Indicators on India (Selected Accounts - US\$ millions)

Year	GDP	GDP % Change	Fiscal Deficit (as%GDP)	CPI	CPI % Change	WPI	WPI % Change	Foreign Investment	Foreign Portfolio Investment	Trade Balance	Foreign Exchange Rate/US\$	NRI Deposits	Foreign Exchange Reserve	FI
88-89	243,547.90	N/A	7.80%	163	N/A	154.2	N/A	N/A	N/A	5,526	14.482	N/A	4,226	N/A
89-90	245,457.40	0.78%	7.80%	173	6.13%	165.7	7.46%	N/A	N/A	4,607	16.649	N/A	3,368	N/A
90-91	266,286.00	8.49%	8.30%	193	11.56%	182.7	10.26%	103	N/A	5,832	17.943	1536	2,236	N/A
91-92	225,557.00	-15.30%	5.90%	219	13.47%	207.8	13.74%	133	8	1,546	24.474	290	5,631	N/A
92-93	204,781.20	-9.21%	5.70%	240	9.59%	228.7	10.06%	557	92	3,345	30.649	2001	6,434	N/A
93-94	225,449.50	10.09%	7.40%	258	7.50%	247.1	8.05%	4,235	3,493	1,068	31.366	1205	15,068	N/A
94-95	257,012.00	14.00%	6.70%	293	13.57%	285.2	15.42%	4,807	3,141	2,011	31.388	172	20,000	N/A
95-96	276,100.00	7.43%	4.20%	319	8.87%	299.5	5.01%	4,615	2,672	4,881	33.45	1103	17,044	N/A
96-97	296,800.00	7.50%	4.10%	351	10.03%	320.1	6.88%	5,963	3,025	5,663	35.50	3350	22,367	N/A
97-98	311,800.00	5.05%	4.80%	380	8.26%	336.2	5.03%	5,353	1,828	6,799	37.16	1125	25,975	N/A
98-99	257,125.89	-17.53%	5.10%	414	8.95%	141.7	-57.85%	2,312	-68	9,171	42.10	960	29,522	N/A
99-00	265,242.49	3.16%	5.40%	434	4.83%	150.9	6.49%	5,117	3,024	12,849	43.30	1540	35,058	2,135
00-01	261,247.26	-1.51%	5.70%	445	2.53%	159.2	5.50%	5,862	2,590	5,976	45.70	2316	39,554	1,847
01-02	265,010.53	1.44%	6.20%	469	5.39%	160.7	0.94%	6,686	1,952	5,790	47.50	2754	46,561	1,505
02-03	424,090.91	60.03%	5.90%	487	3.84%	172.3	7.22%	4,161	944	8,693	48.40	2978	71,890	377
03-04	483,699.67	14.06%	4.50%	504	3.49%	180.3	4.64%	13,744	11,356	14,307	45.95	3642	107,448	10,918
04-05	531,849.54	9.95%	4%	525	4.17%	189.5	5.10%	13,000	9,287	27,982	44.93	-964	135,571	8,662
05-06	588,321.66	10.62%	4.10%	551	4.95%	197.2	4.06%	17,224	12,494	46,075	44.27	2789	145,108	9,926
06-07	625,329.82	6.29%	3.80%	588	6.72%	209.2	6.09%	13,374	7,133	41,723	45.48	2029	173,081	N/A

At 80-81 prices

At 93-94 prices

At 99-00 prices

Citation:

Government of India, Economic Survey 1995-2007, Tables 1.1, 6.1, and 6.2

Kaushik, Surendra. "India's Democratic Economic Transformation." Challenge, Sept./Oct. 1996, 54-61

GDP

Year	GDP	GDP % Change	Fiscal Deficit (as%GDP)
88-89	243,547.90	N/A	7.80%
89-90	245,457.40	0.78%	7.80%
90-91	266,286.00	8.49%	8.30%
91-92	225,557.00	-15.30%	5.90%
92-93	204,781.20	-9.21%	5.70%
93-94	225,449.50	10.09%	7.40%
94-95	257,012.00	14.00%	6.70%
95-96	276,100.00	7.43%	4.20%
96-97	296,800.00	7.50%	4.10%
97-98	311,800.00	5.05%	4.80%
98-99	257,125.89	-17.53%	5.10%
99-00	265,242.49	3.16%	5.40%
00-01	261,247.26	-1.51%	5.70%
01-02	265,010.53	1.44%	6.20%
02-03	424,090.91	60.03%	5.90%
03-04	483,699.67	14.06%	4.50%
04-05	531,849.54	9.95%	4%
05-06	588,321.66	10.62%	4.10%
06-07	625,329.82	6.29%	3.80%

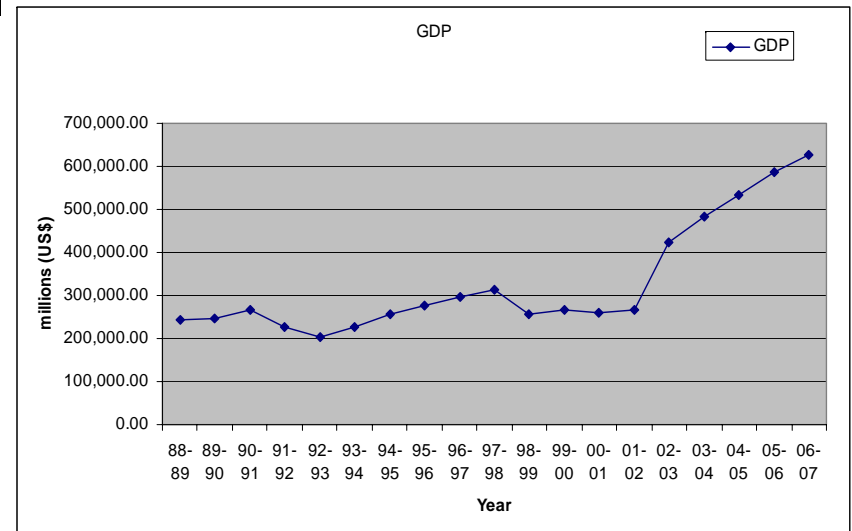
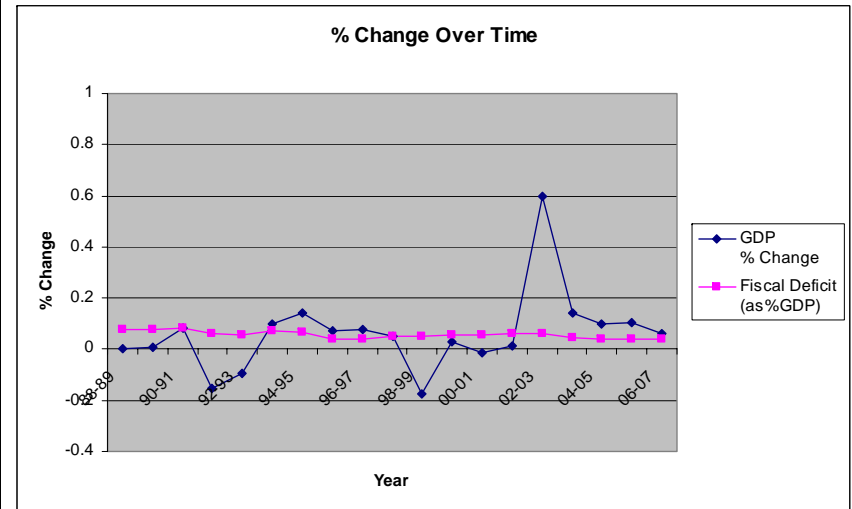
Values in US\$ millions

- At 80-81 prices
- At 93-94 prices
- At 99-00 prices

Footnote:

Gross domestic product figures are at factor cost (new series base).

Rupee GDP at factor cost divided by annual exchange rate US\$ from table 1.1



Balance of Payments

Year	* CPI	CPI % Change	* WPI	WPI % Change
88-89	163	N/A	154.2	N/A
89-90	173	6.13%	165.7	7.46%
90-91	193	11.56%	182.7	10.26%
91-92	219	13.47%	207.8	13.74%
92-93	240	9.59%	228.7	10.06%
93-94	258	7.50%	247.1	8.05%
94-95	293	13.57%	285.2	15.42%
95-96	319	8.87%	299.5	5.01%
96-97	351	10.03%	320.1	6.88%
97-98	380	8.26%	336.2	5.03%
98-99	414	8.95%	141.7	-57.85%
99-00	434	4.83%	150.9	6.49%
00-01	445	2.53%	159.2	5.50%
01-02	469	5.39%	160.7	0.94%
02-03	487	3.84%	172.3	7.22%
03-04	504	3.49%	180.3	4.64%
04-05	525	4.17%	189.5	5.10%
05-06	551	4.95%	197.2	4.06%
06-07	588	6.72%	209.2	6.09%

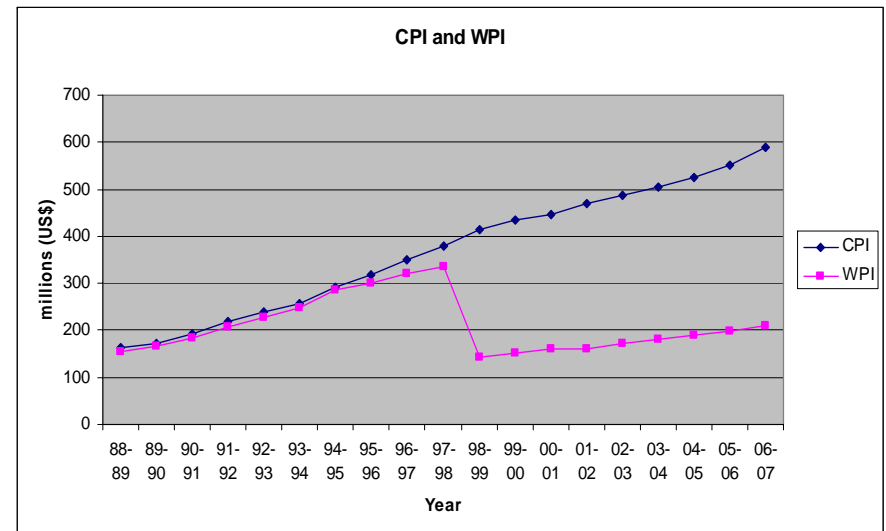
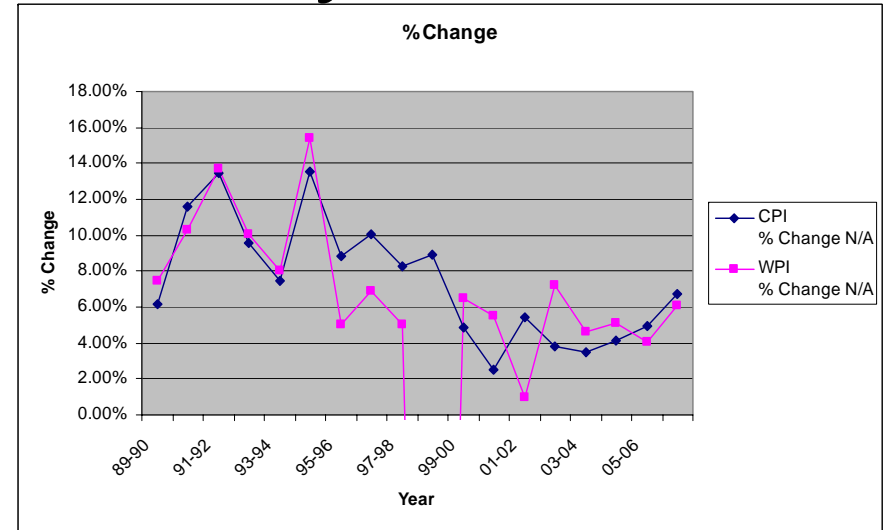
Values in US\$ millions

- At 80-81 prices
- At 93-94 prices
- At 99-00 prices

Footnote:

CPI and WPI Index (with base 80-81, 93-94, 99-00 =100) at the end of fiscal year.

Table 1.1



External Sector

Year	Trade Balance	Foreign Exchange Rate/US\$	NRI Deposits	Foreign Exchange Reserve	Foreign Investment	Foreign Portfolio Investment	FII
88-89	-5,526	14.482	N/A	4,226	N/A	N/A	N/A
89-90	-4,607	16.649	N/A	3,368	N/A	N/A	N/A
90-91	-5,832	17.943	1,536	2,236	103	N/A	N/A
91-92	-1,546	24.474	290	5,631	133	8	N/A
92-93	-3,345	30.649	2,001	6,434	557	92	N/A
93-94	-1,068	31.366	1,205	15,068	4,235	3,493	N/A
94-95	-2,011	31.388	172	20,000	4,807	3,141	N/A
95-96	-4,881	33.45	1,103	17,044	4,615	2,672	N/A
96-97	-5,663	35.50	3,350	22,367	5,963	3,025	N/A
97-98	-6,799	37.16	1,125	25,975	5,353	1,828	N/A
98-99	-9,171	42.10	960	29,522	2,312	-68	N/A
99-00	-12,849	43.30	1,540	35,058	5,117	3,024	2,135
00-01	-5,976	45.70	2,316	39,554	5,862	2,590	1,847
01-02	-5,790	47.50	2,754	46,561	6,686	1,952	1,505
02-03	-8,693	48.40	2,978	71,890	4,161	944	377
03-04	-14,307	45.95	3,642	107,448	13,744	11,356	10,918
04-05	-27,982	44.93	-964	135,571	13,000	9,287	8,662
05-06	-46,075	44.27	2,789	145,108	17,224	12,494	9,926
06-07	-41,723	45.48	2,029	173,081	13,374	7,133	N/A

Values in US\$ millions

At 80-81 prices

At 93-94 prices

At 99-00 prices

Footnote:

Trade Balance is difference between Imports and Exports from Table 1.1 – All values are negative. (i.e. Imports exceed exports for entire period 1988-2007 reported here)

Exchange Rate percent change indicates the rate of appreciation (+)/depreciation (-) of the Rupee vis-à-vis the US Dollar - Table 1.1

NRI Deposits are net values in US\$ - Table 6.2

Foreign Exchange Reserve values from Foreign Currency Assets outstanding at end of financial year - Table 1.1

